



# INDOFINE Chemical Company, Inc.

121 Stryker Lane, Bldg. 30, Suite 1 • Hillsborough, NJ 08844 • U.S.A.

Phone: (908) 359-6778 • FAX: (908) 359-1179

website: [www.indofinechemical.com](http://www.indofinechemical.com)

e-mail: [chemical@indofinechemical.com](mailto:chemical@indofinechemical.com)

## CERTIFICATE OF ANALYSIS

Catalog Number: D-504

Product Name: **2',4'-DIHYDROXYCHALCONE**

CAS Number: [1776-30-3]

Lot Number: 98054

Chemical Formula: C<sub>15</sub>H<sub>12</sub>O<sub>3</sub>

Molecular Weight: 240.25

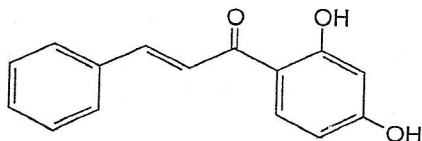
Melting Point: 145-147°C

TLC: Hexane: Ethyl acetate (7:3)

Appearance: Yellow powder

Solubility: Soluble in chloroform

Purity: 96+%





# INDOFINE Chemical Company, Inc.

121 Stryker Lane, Bldg. 30, Suite 1 • Hillsborough, NJ 08844 • U.S.A.

Phone: (908) 359-6778 • FAX: (908) 359-1179

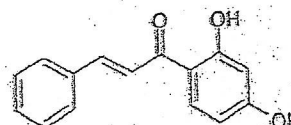
website: [www.indofinechemical.com](http://www.indofinechemical.com)

e-mail: [chemical@indofinechemical.com](mailto:chemical@indofinechemical.com)

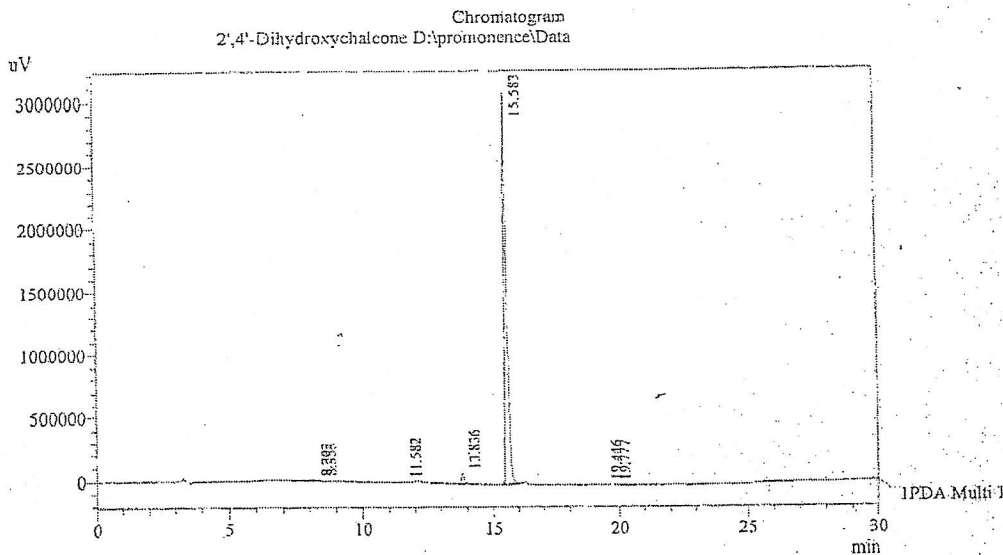
## HPLC ANALYSIS

Catalog no.: D-504  
Product name: 2',4'-Dihydroxychalcone  
Lot No.: 98054

Acquired by : Sanjeev  
Sample Name : 2',4'-Dihydroxychalcone  
Sample ID : Lot No:-98054  
Injection Volume : 20 uL  
Data Filename : 2905121.ed  
Method Filename : Linear Gradient.M.lcm



Column : LUNA C-18(2), (250mm x4.6mm 5.0µ)  
Flow : 1.000 mL/min  
Mobile Phase : A(0.05% TFA in water) B(Acetonitrile)  
0.01 90 10  
12.0 10 90  
20.0 10 90  
23.0 90 10  
30.0 90 10



1 PDA Multi 1 / 225nm 4nm

PeakTable

Peak#	Name	Ret. Time	Area	Area %	Relative Retention Time
1	RT:8.202	8.202	58119	0.26	0.53
2	RT:8.353	8.353	60713	0.27	0.54
3	RT:11.582	11.582	16185	0.07	0.74
4	RT:13.836	13.836	598741	2.70	0.89
5	2',4'-Dihydroxychalcone	15.583	21424254	96.64	1.00
6	RT:19.446	19.446	7590	0.03	1.25
7	RT:19.777	19.777	2972	0.01	1.27
Total			22168575	100.00	

# INDOFINE Chemical Company, Inc.

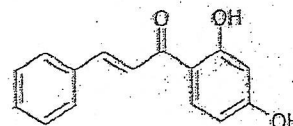
121 Stryker Lane, Bldg. 30, Suite 1 • Hillsborough, NJ 08844 • U.S.A.

Phone: (908) 359-6778 • FAX: (908) 359-1179

website: [www.indofinechemical.com](http://www.indofinechemical.com)

e-mail: [chemical@indofinechemical.com](mailto:chemical@indofinechemical.com)

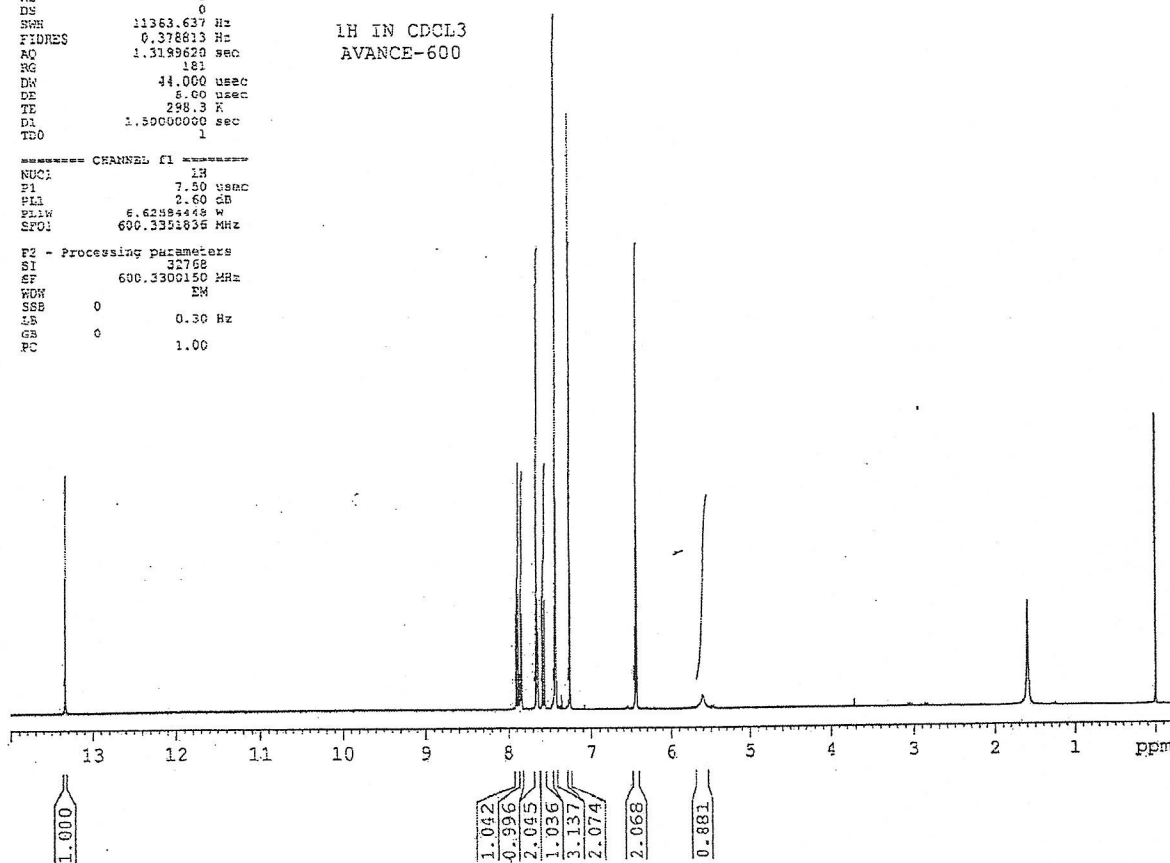
Catalog no.: D-504  
Product name: 2',4'-Dihydroxychalcone  
Lot No.: 98054



SOLVENT CDCl3  
NS 8  
DS 0  
SWH 11363.637 Hz  
FIDRES 0.378613 Hz  
AQ 1.3189620 sec  
RG 181  
DN 44.000 usec  
DE 5.00 usec  
TE 298.3 K  
D1 1.5000000 sec  
TD0 1

1H IN CDCl3  
AVANCE-600

===== CHANNEL f1 =====  
NUC1 1H  
P1 7.50 usec  
PL1 2.60 dB  
PL1W 6.62394468 W  
SFO1 600.3301835 MHz  
F2 - Processing parameters  
SI 32768  
SF 600.3300150 MHz  
WDW EM  
SSB 0  
LB 0.30 Hz  
GB 0  
PC 1.00





# INDOFINE Chemical Company, Inc.

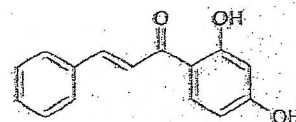
121 Stryker Lane, Bldg. 30, Suite 1 • Hillsborough, NJ 08844 • U.S.A.

Phone: (908) 359-6778 • FAX: (908) 359-1179

website: [www.indofinechemical.com](http://www.indofinechemical.com)

e-mail: [chemical@indofinechemical.com](mailto:chemical@indofinechemical.com)

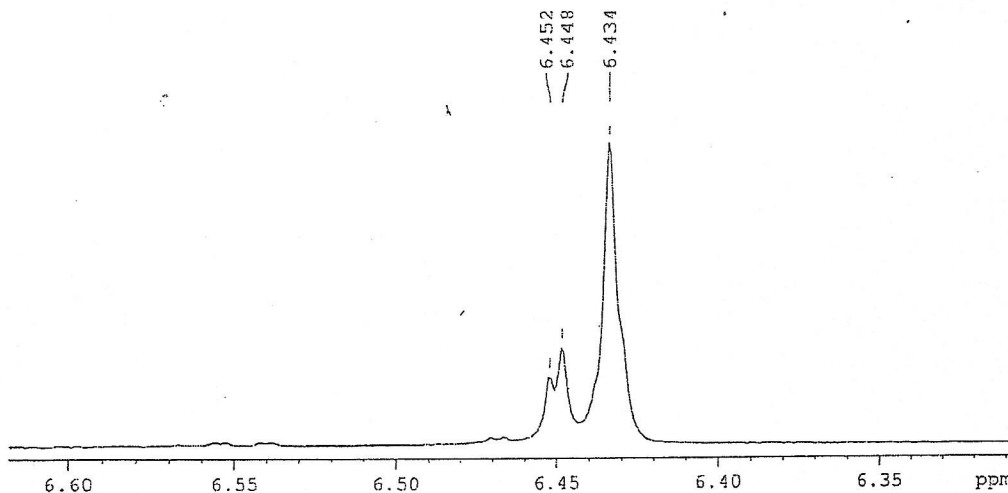
Catalog no.: D-504  
Product name: 2',4'-Dihydroxychalcone  
Lot No.: 98054



SOLVENT CDCl<sub>3</sub>  
NS 0  
DS 0  
SWH 11363.637 Hz  
FIDRES 0.378813 Hz  
AQ 1.3195620 sec  
RG 181  
PX 44.000 usec  
DE 8.50 usec  
TE 298.3 K  
SI 1.50000000 sec  
TD0 1

1H IN CDCl<sub>3</sub>  
AVANCE-600

\*\*\*\*\* CHANNEL f1 \*\*\*\*\*  
NUC1 1H  
P1 7.50 usec  
PL1 2.60 dB  
PL1W 6.62584448 W  
SFO1 600.330150 MHz  
SI 32768  
SF 600.3300150 MHz  
WDW EM  
SSB 0  
LB 0.30 Hz  
GB 0  
PC 1.00





# INDOFINE Chemical Company, Inc.

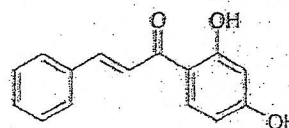
121 Stryker Lane, Bldg. 30, Suite 1 • Hillsborough, NJ 08844 • U.S.A.

Phone: (908) 359-6778 • FAX: (908) 359-1179

website: [www.indofinechemical.com](http://www.indofinechemical.com)

e-mail: [chemical@indofinechemical.com](mailto:chemical@indofinechemical.com)

Catalog no.: D-504  
Product name: 2',4'-Dihydroxychalcone  
Lot No.: 98054



SOLVENT CDCL3  
NS 0  
DS 0  
SWH 11362.637 Hz  
FIDRES 0.378813 Hz  
AQ 1.3195620 sec  
RG 181  
DM 44.000 usec  
DE 6.00 usec  
TE 298.2 K  
D1 1.50000000 sec  
TD0 1

1H IN CDCL3  
AVANCE-600

===== CHANNEL f1 =====  
NUC1 1H  
P1 7.50 usec  
PL1 2.60 dB  
PL1W 6.62584448 W  
SFO1 600.3351456 MHz  
SI 32768  
SF 600.3306150 MHz  
WDW EM  
SSP 0  
LB 0.50 Hz  
GB 0  
PC 1.00

